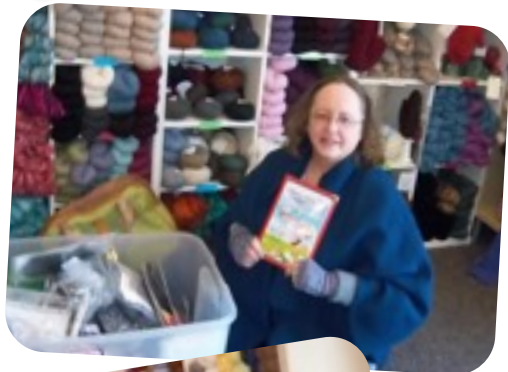


# Yarn Quest 2011

Thank you to our sponsors who contributed to this event!



- |                              |                               |                             |
|------------------------------|-------------------------------|-----------------------------|
| Alana Marketing              | DRG                           | Mountain Meadow Wool Mill   |
| Alisha Goes Around           | Duchess Fibers LLC            | Muench Yarns, Inc.          |
| Annie Adams Adornments, Inc. | Eco Butterfly Organic         | Namaste                     |
| Arnhold's Knitting Studio    | Elegant Yarns, Inc.           | Nancy 's Knit Knacks LLC    |
| Asland Trends                | Emerald Isle Designs          | One World Button Supply Co. |
| Bar-Maids                    | Fairmount Fibers, Ltd.        | Pagewood Farm               |
| BEKA, Inc.                   | Feza Yarns LLC                | Pinecone Designs            |
| Berroco                      | Fleece Artist                 | Plymouth Yarn               |
| Blue Sky Alpacas             | Frabjous Fibers               | Prism Arts                  |
| Briggs & Little              | Frederick Special Advertising | Puffin & Company            |
| Brown Sheep Co.              | Green Mountain Spinnery       | Red Barn Yarn               |
| Cardinal Designs, LLC        | H. A. Kidd and Company, LTD   | Rockport Publishers         |
| Cascade Yarn                 | HeartStrings FiberArts        | RYN Yarns                   |
| CF Headwear                  | Himalaya Yarn                 | Shaune Bazner Accessories   |
| Checker Distributors         | HiyaHiya                      | Shi Bui                     |
| Chic Knits                   | Imperial Stock Ranch          | Skacel Yarn                 |
| Churchmouse Yarns and Teas   | Indian Artisans               | Swedish Yarns               |
| CiD Designs                  | Jean Christensen              | T & C Imports               |
| Classic Elite Yarns          | JHB International             | Tahki Stacy Charles, Inc.   |
| Clover Needle Craft          | Joland                        | The Nantucket Bagg Company  |
| Colonial Needle Company      | Knitting Fever                | Tunney Wool Co.             |
| Conjoined Creations          | Knowknits                     | Unicorn Editions, Ltd.      |
| Creative Crafts Group        | Lantern Moon                  | Up North Fiber Art Supply   |
| Crystal Palace Yarns         | Little Piggy Patterns         | Westminister Fibers, Inc.   |
| Dale of Norway               | Lorna's Laces                 | Wild Fibers                 |
| Della Q                      | Mango Moon                    | XRX                         |
| Denise Interchangeable       | Marie Mayhew Designs          | Y2Knit                      |
| Dill Buttons of America      | Misti Alpaca                  | Yarn Sisters                |
| Dream in Color               | Mountain Colors               |                             |

## Yarn Quest 2011 Winners!



- Katherine Boarman  
 Debb Cutts  
 Elizabeth Husberg  
 Nancy Sjoberg  
 Rebecca Seaquist  
 Sarah Parker  
 Donna Soderlurf  
 Deanna Boris  
 Brenda Pricco  
 Jane Ann Calhoun  
 Kirsten Fitzel  
 Julie Marten  
 Millie